



# hallmark of quality

Ensuring your new home has everything on your wish list is important, and that's why a visit to Hallmark Homes' new Cardrona show home in Lincoln is essential.

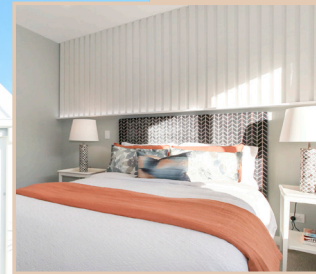
Architecturally designed, and inspired by the snowy mountain peaks and rolling hillsides surrounding the Cardrona Valley, Hallmark's latest show home is a testament to the quality its name has become synonymous with.

Aptly named the Cardrona, from its road frontage the show home features a striking combination of steep gables, flat roof lines and a neutral colour palette, all making it stand out from the crowd.

Inside are multiple living areas providing a variety of options for a modern family, and throughout the home you will find custom cabinetry, luxurious finishes, and designer furnishings.

Raking ceilings add a "wow" factor in the living room and kitchen by adding impressive height, and skylights allow more natural light to filter in.

Visit the new show home at 90 Southfield Drive, Te Whāriki, Lincoln, Wednesday through to Sunday, from 12-4pm.



#### AWARD-WINNING HOMES & SERVICE

Carefully listening to clients' needs and delivering what they want is all part of the package at Hallmark Homes.

"We listen carefully to your needs, follow through with great customer service, and never compromise on quality," say owners Mike and Esther Bonne.

"We promise that when you build with Hallmark Homes, you will always be listened to, you will feel helped throughout the whole process, and most importantly you'll have a home you'll always love to live in," they add.

An integral part of the build are the many key suppliers and companies who work hard to complete each project. Some of whose logos are featured below on these pages.

From the foundations to the finishes, the fine detail is all part of the service, as is obtaining the consents and seeing each build through to handing the keys over on completion.

Once consent is lodged, clients meet the entire Hallmark team to go through their project, and fully understand all of the expectations.

The show home is one way to check out many of the options available, and decide, for example, on doors and windows, sort the drainage, hard landscaping, lights and electrical fittings, tiling and everything essential in a new build.

"Our commitment to you is on going," say Mike and Esther. "We will provide you with a comprehensive 10 year Master builders warranty, and a 12 month maintenance period."

Call 03 352 7777 or visit the website.

[www.hallmarkhomes.co.nz](http://www.hallmarkhomes.co.nz)



[www.sandalwooddesign.co.nz](http://www.sandalwooddesign.co.nz)



[www.imotiling.co.nz](http://www.imotiling.co.nz)



[www.plumbingworld.co.nz](http://www.plumbingworld.co.nz)



[www.carters.co.nz](http://www.carters.co.nz)



[www.livinghouse.co.nz](http://www.livinghouse.co.nz)



[www.exoconstruction.co.nz](http://www.exoconstruction.co.nz)



[www.insulfound.co.nz](http://www.insulfound.co.nz)



[www.hselectrical.co.nz](http://www.hselectrical.co.nz)



[www.clconcrete.co.nz](http://www.clconcrete.co.nz)



Call 021 107 4153



[www.firstwindows.co.nz](http://www.firstwindows.co.nz)



[www.csfordoors.co.nz](http://www.csfordoors.co.nz)

as seen in  
**metropol**