

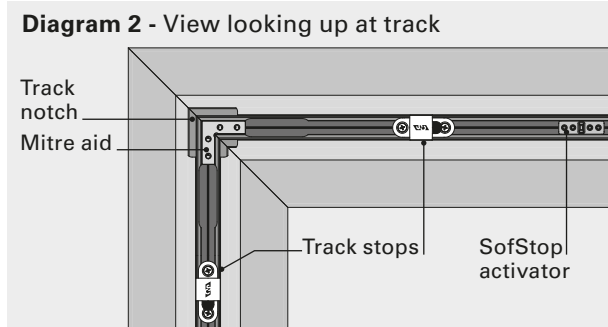
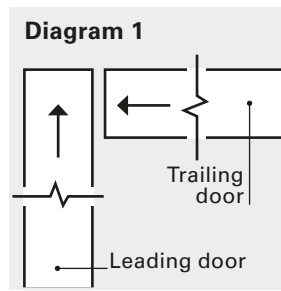
Installation Instructions

Cavity Slider with SmartMount



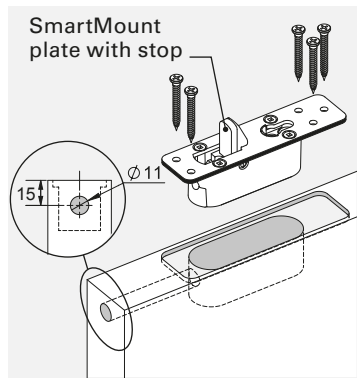
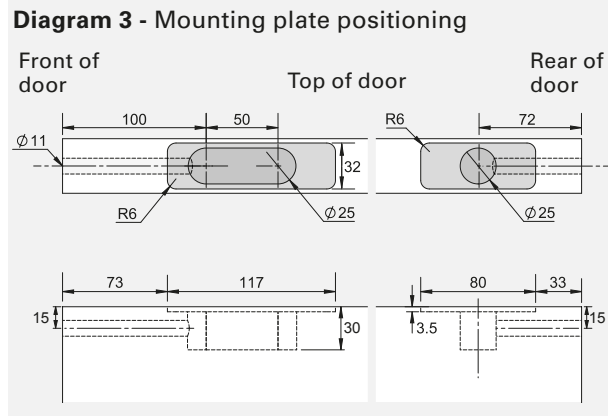
CornerMeeting detail can be applied to **CS CavitySliders** and **CS TrackSystems** only.

In all cases, one door (the leading door) will overlap the other door (the trailing door). See **Diagram 1**.



Installation Notes

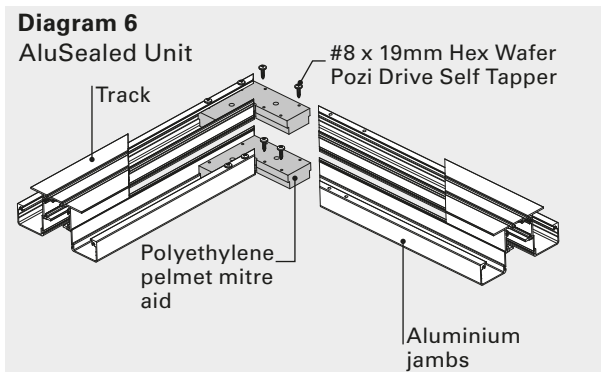
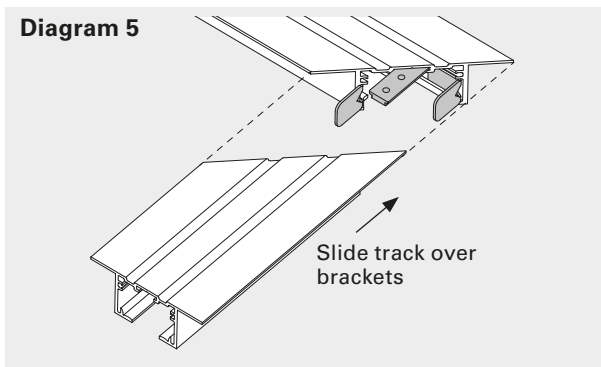
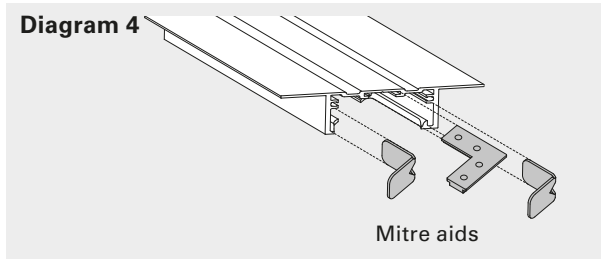
1. Standard Bi-Parting Installation Instructions should be followed for the majority of the installation.
2. Mounting plates should be positioned as shown (**Diagram 3**).



Front and rear edge of the doors: Drill Ø11mm access holes as shown. Make sure they are exactly in the centre of the door thickness, run straight and meet the mounting plate holes. A drilling guide is available if required.

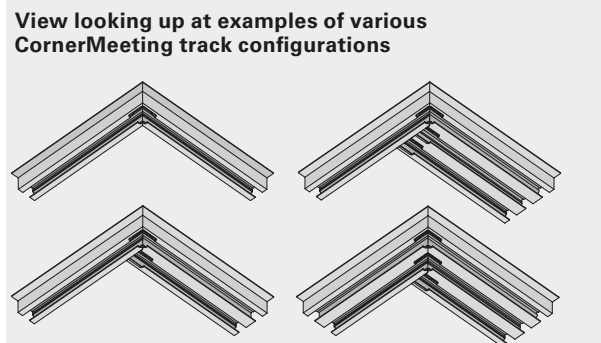
4. Check floor clearances as doors are sliding in opposing planes and may be affected by uneven floors. Pack underneath the bottom plate where required.

CornerMeeting Track Assembly Detail



CS recommends the use of **CS NewYorker** doors when using this detail:

- Aluminium door leaves are straight, ensuring a neat overlap join when tracks are installed correctly on site.
- Magnets may be hidden within the aluminium door stiles for a positive closing action.



© CS Cavity Sliders. New Zealand Patent No: 533838. All copyright and other property in this document is reserved by Cavity Sliders Limited. Details and specifications are subject to change without notice. Whilst all care is taken to ensure the accuracy of all information, no responsibility will be accepted for any errors or omissions.